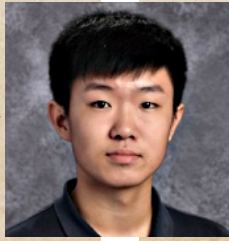
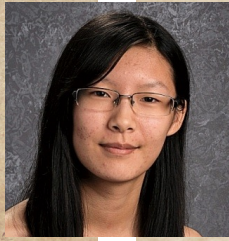




PHIL-MONT CHRISTIAN ACADEMY

Est. 1943



The mission of Philadelphia-Montgomery Christian Academy is to provide excellent academic education from a consistent Christian world-and-life view for the children in Christian families.

SOLI DEO GLORIA

Phil-Mont Christian Academy

35 Hillcrest Avenue, Erdenheim, PA 19038
215-233-0782 ext. 410

More info: lgeating@phil-mont



Accredited by the Middle States Association of Colleges and Schools Commissions on Elementary and Secondary Schools
Member: ACSI and CSI

International Student Program

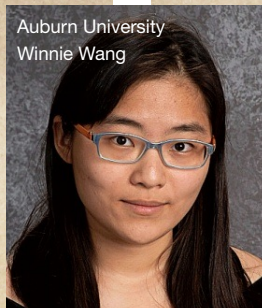
International Admissions

Thank you for considering Phil-Mont Christian Academy as a potential school for your international student. We have a rich history of working with caring families in other countries to prepare their children for college or university. Our school is a small, safe, academically rigorous college preparatory school which has been in operation since 1943.

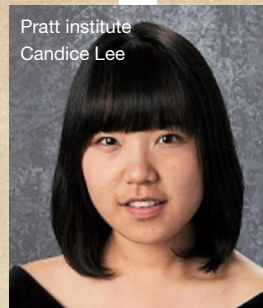
Phil-Mont is authorized under Federal law through the Department of Homeland Security to enroll non-immigrant students.

We accept applications from students going into grades 7-11 with certain stipulations. Primary entry grades are 9 and 10. See our full documentation for details.

Phil-Mont students are required to be proficient in English, be hosted by a church-going, Christian family, attend church services on a weekly basis, take Bible courses, and are strongly encouraged to participate in co-curricular activities like sports and drama.



Auburn University
Winnie Wang



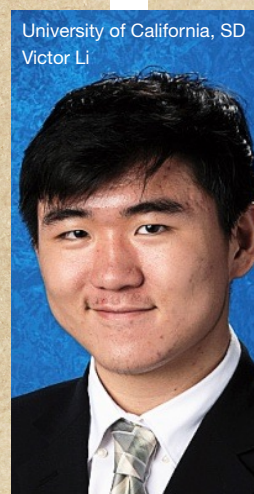
Pratt Institute
Candice Lee

Curriculum & Club Highlights:

Bible, History, English, Math, Science, Art, Health/P.E., Competitive sports, Drama, Band, Choir, and various other clubs and activities like NHS, Interact, Jazz Band, Writers Workshop, Yearbook, Video Club, Robotics Club, and Chapel Leadership Team



Penn State University
Aries Guan



University of California, SD
Victor Li



School Details

- Full school enrollment:** Approx. 260
- International Enrollment:** 17
- English Proficiency:** Required
- School location type:** Suburban, 1 acre, next to a park
- Religious affiliation:** Christian, Protestant
- AP courses:** Calculus, Art History, English
- Honors courses:** 14
- Student-to-Teacher ratio:** 10:1

98% of our graduates enter

college and many are given excellent scholarship opportunities.

Student involvement and leadership opportunities include interscholastic athletics, student clubs, and an excellent fine arts program covering drama, vocal & instrumental music, and visual arts.

